

# Training Module Three: Purchasing TAC Credits

**October 2025 v2.2**

All product names, model numbers or other manufacturer identifiers not attributed to GSMA are the property of their respective owners.  
©GSMA Services LLC 2025

# Purchasing TAC credits is the second step towards TAC allocation



# After your registration is approved, you will receive access credentials to login to the GSMA's platform

## Need to apply for TAC?

3GPP requires all device types that can connect to a mobile wireless network to be identifiable by a Type Allocation Code (TAC), including IoT devices, payment terminals and connected vehicles. Crucially, it's the 8-digit number that forms the first part of the 15-digit IMEI (International Mobile Equipment Identity), which uniquely identifies each individual connected device, so they can be transported around the world.

TAC / IMEI also helps enable governments to collect the correct taxes, devices to operate globally on mobile networks, and the identification of counterfeit or stolen devices.

### Registering for the first time?

Please use the button below to start the process. As there are strict rules governing TAC allocation, we suggest you also [download our training modules here](#).

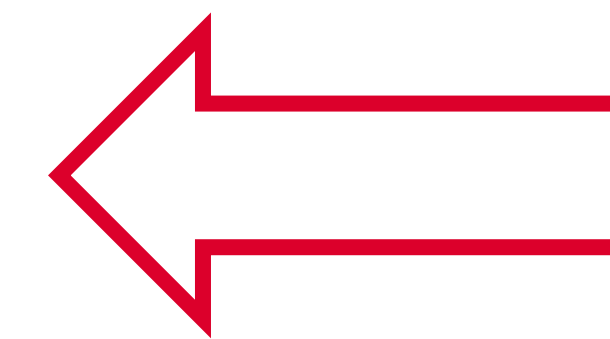
### TAC Allocation Login

Username:

Password:

[Forgot Password?](#)

Use of this service is subject to relevant [Terms of Use](#)



[Click here to login](#)

After initial login,  
change your password  
and provide answers  
to security questions

# Navigate to the Buy TAC page, and fill out the details requested



**Purchase Quantity**

Refer to the TAC Rules training module. You only need 1 TAC per model



**PO Number\***

If you have a PO number, input it here for future reference

# Choose between the single or subscription-based pricing plan



## Standard Fee Plan

The standard fee is **US\$450** per TAC.

There is an annual cap of **US\$85,000**, so if your company reaches this level within a 12-month period, TAC allocated for the remainder of the year is free of charge.

## Subscription Plan

This enables unmetered TAC consumption for a fixed annual fee **US\$65,000**. It eliminates repetitive ordering and payment administration and makes TAC immediately available.

# GSMA members get a 10% discount

TAC fee options	GSMA Members	Non GSMA Members								
<b>Standard Fee Plan</b>	<table><thead><tr><th>Fee per TAC</th><th>Annual Fee Cap</th></tr></thead><tbody><tr><td><b>\$405</b></td><td><b>\$85,000</b></td></tr></tbody></table>	Fee per TAC	Annual Fee Cap	<b>\$405</b>	<b>\$85,000</b>	<table><thead><tr><th>Fee per TAC</th><th>Annual Fee Cap</th></tr></thead><tbody><tr><td><b>\$450</b></td><td><b>\$85,000</b></td></tr></tbody></table>	Fee per TAC	Annual Fee Cap	<b>\$450</b>	<b>\$85,000</b>
Fee per TAC	Annual Fee Cap									
<b>\$405</b>	<b>\$85,000</b>									
Fee per TAC	Annual Fee Cap									
<b>\$450</b>	<b>\$85,000</b>									
<b>Subscription Plan</b>	<table><tbody><tr><td>Annual Fee (paid in advance)</td></tr><tr><td><b>\$58,500</b></td></tr></tbody></table>	Annual Fee (paid in advance)	<b>\$58,500</b>	<table><tbody><tr><td>Annual Fee (paid in advance)</td></tr><tr><td><b>\$65,000</b></td></tr></tbody></table>	Annual Fee (paid in advance)	<b>\$65,000</b>				
Annual Fee (paid in advance)										
<b>\$58,500</b>										
Annual Fee (paid in advance)										
<b>\$65,000</b>										

# You can either pay online or offline



## Pay Online

You can use a **company credit card to make payment**

## Pay Offline

The system will generate an **invoice with details** to do a wire transfer.

You will need to wait until payment is complete before being able to **request TAC**

# Only once payment has been received, you will be able to fill out the TAC Application Request Form

**Your payment Reference**

**Invoice Number**  
TAC201701282

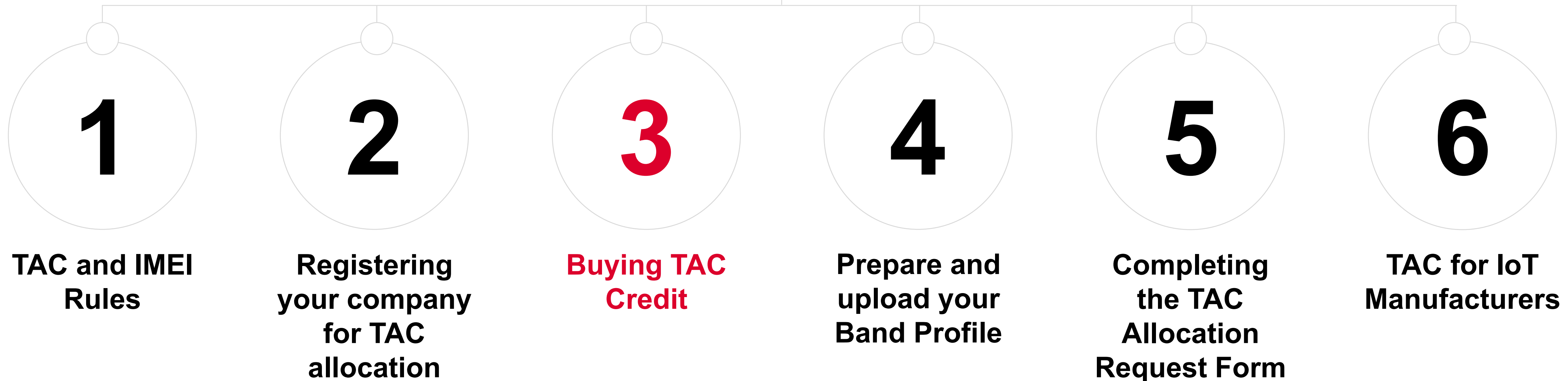
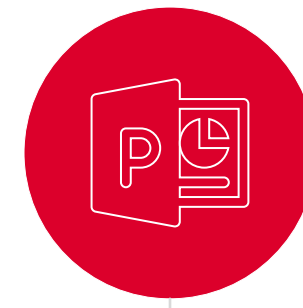
**Amount Paid**  
450,00

**Transaction Reference Number**  
5-9-2708608



Your payment is successful. A copy of the invoice has been sent to your registered email id.

# ***This document is part six of six TAC training modules***



# GSMA TAC Allocation Service

[www.gsma.com/tac](http://www.gsma.com/tac)

**TAC support:**  
[tac@gsma.com](mailto:tac@gsma.com)  
+1 408 617 8959

