

# Training Module Six: TAC Application for IoT Manufacturers

**October 2025 v2.2**

All product names, model numbers or other manufacturer identifiers not attributed to GSMA are the property of their respective owners.  
©GSMA Services LLC 2025

# What is a TAC and who issues it?



Type Allocation Code (TAC)

**86**

**916102**

Serial Number

**991292**

Check Digit

**0**

**Reporting Body identifier**

**Type Identifier**  
Indicating brand owner and device model type

**Unique Number** assigned to individual devices by the manufacturer

A function of the other digits [calculated by the manufacturer]

**The International Mobile Equipment Identifier (IMEI)** is a unique 15 digit code which identifies each *individual* mobile device

# What Mobile devices need a TAC?

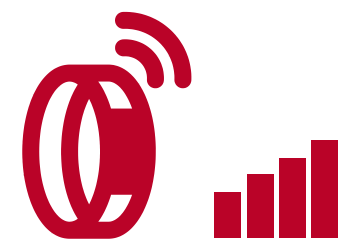
## IoT Equipment Types



**IoT Device**



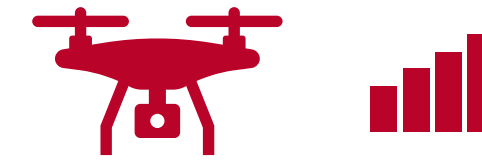
**Modem**



**Wearable**



**PoS /  
Device for APD**



**UAV / UAS**



**Vehicle TCU**

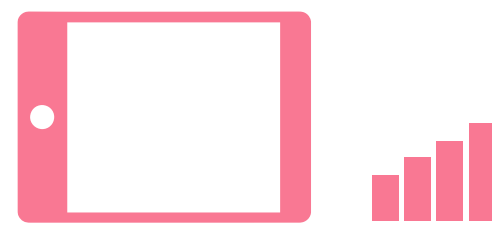
## Other Equipment Types



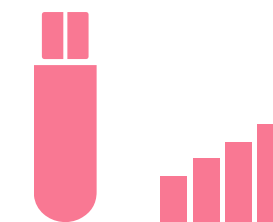
**Mobile /  
Feature Phone**



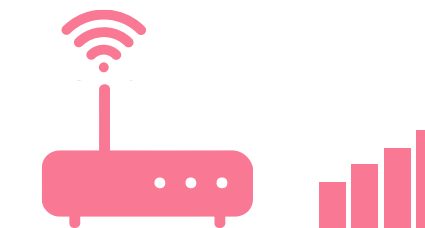
**Smartphone**



**Tablet**



**Dongle**

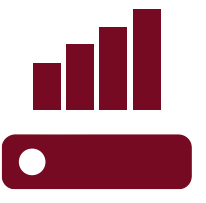


**WLAN Router**



**Satellite**

# When IoT modems are installed in other equipment, who applies for TAC?



Modem



Remote Camera



Smart meter manufacturer





Automaker

**Modem producer applies for TAC**

# When do IoT require TAC?



Where a device connects to a cellular network, either a 3GPP or 3GPP2 defined network, it needs a TAC

2G	5G		
3G	WCDMA	E-ULTRA	New Radio (NR) Standalone/ Dual Connectivity (DC)
4G	LTE-M	FDD /TDD	MIoT

# Who benefits from IoT TAC / IMEI?



## IoT Brand Owners and Modem Producers

- Network connectivity
- Compliance with international trade regulation
- Type approval



## Customs & Excise

- Taxation
- Certification
- Authenticity
- Counterfeit detection



## Operator

- Identification
- Support
- Device blocking
- Lawful interception / location
- Updates
- Configuration
- Analytics
- Sales & marketing
- Service delivery
- Allowlist
- Fraud detection



## Law Enforcement

- Theft checking
- Lawful interception / location
- Compliance checking



## Government & Regulators

- Certification
- Type approval
- Taxation
- Crime management



## IoT Service Providers

- Identification
- SW updates
- Remote control
- Support
- Blocking
- Fraud detection

# Where to apply for TAC?

## Need to apply for TAC?

3GPP requires all device types that can connect to a mobile wireless network to be identifiable by a Type Allocation Code (TAC), including IoT devices, payment terminals and connected vehicles. Crucially, it's the 8-digit number that forms the first part of the 15-digit IMEI (International Mobile Equipment Identity), which uniquely identifies each individual connected device, so they can be transported around the world.

TAC / IMEI also helps enable governments to collect the correct taxes, devices to operate globally on mobile networks, and the identification of counterfeit or stolen devices.

### Registering for the first time?

Please use the button below to start the process. As there are strict rules governing TAC allocation, we suggest you also [download our training modules here](#).

### Who provides TAC?

Only the GSMA is authorised by 3GPP to allocate TAC for all GSM mobile device identities globally, through our appointed reporting bodies. We make sure it's allocated in compliance with standards, industry agreed practice and worldwide regulatory requirements.

[Learn more in our FAQs.](#)

[Register here](#)

 [Visit the TAC Allocation page here](#)

 [Here you find training materials to help you](#)

## Training modules

GSMA TAC Allocation Training Module 1: programming rules

[Download](#)

GSMA TAC Allocation 培训模块 1: 编码规则

[下载](#)

GSMA TAC Allocation Training Module 2: initial registration

[Download](#)

GSMA TAC Allocation 培训模块 2: 初始注册

[下载](#)

GSMA TAC Allocation Training Module 3: TAC payments

[Download](#)

GSMA TAC Allocation 培训模块 3: TAC 付款

[下载](#)

GSMA TAC Allocation Training Module 4: band profiles

[Download](#)

GSMA TAC Allocation 培训模块 4: 频段配置文件

[下载](#)

GSMA TAC Allocation Training Module 5: application form

[Download](#)

GSMA TAC Allocation 培训模块 5: 申请表

[下载](#)

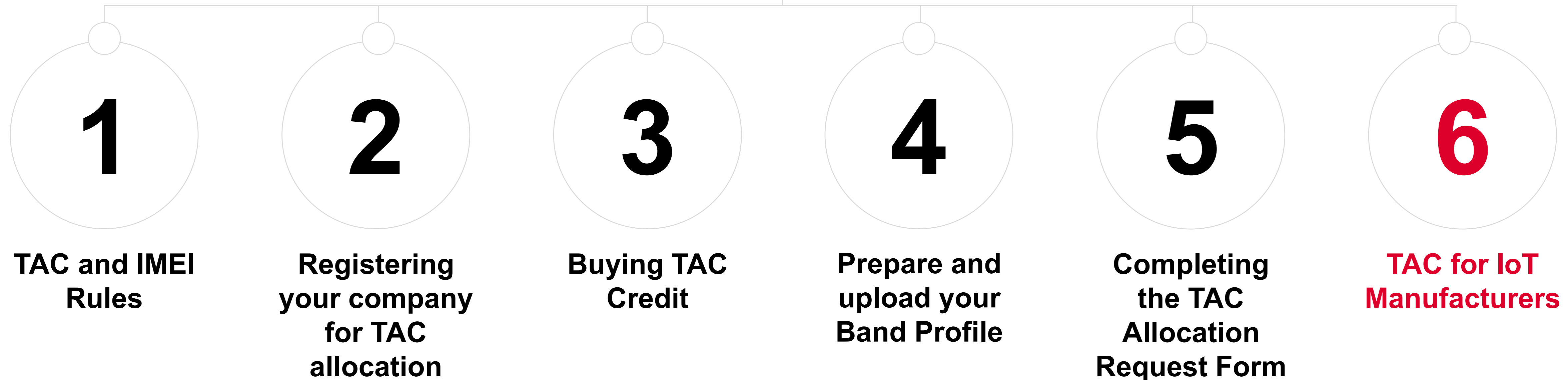
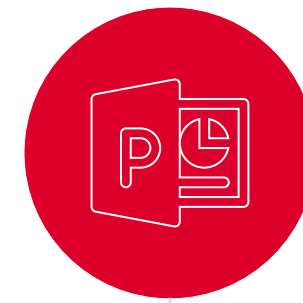
GSMA TAC Allocation Training Module 6: IoT

[Download](#)

GSMA TAC Allocation 培训模块 6: 物联网

[下载](#)

# ***This document is part six of six TAC training modules***



# GSMA TAC Allocation Service

[www.gsma.com/tac](http://www.gsma.com/tac)

**TAC support:**  
[tac@gsma.com](mailto:tac@gsma.com)  
+1 408 617 8959

